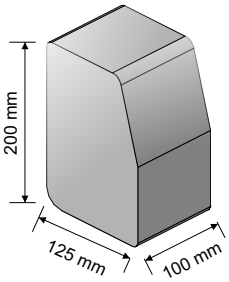
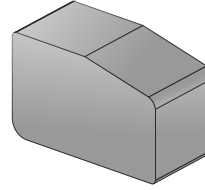


Product Specification - 3 Way Kerb

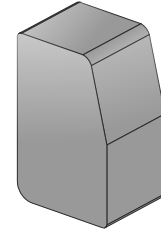


3 Way Linear Kerb

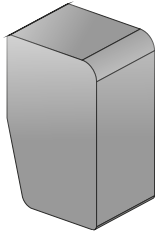
Large 3 Way Kerbs can be laid in three different ways making it extremely versatile. They can also be used in the construction of steps and other landscape features.



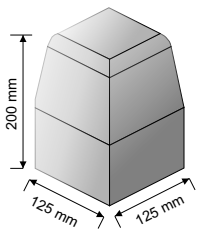
Half batter Low Rise Installation



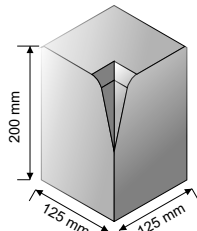
Half batter High Rise Installation



Bullnose Installation



3 Way Internal Corner



3 Way External Corner



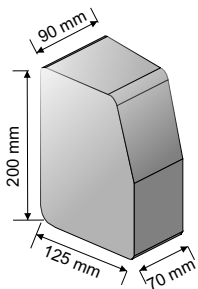
3 Way Linear Kerb: Can be laid in three directions - bullnose, half batter or splay.

Internal & External Corner: For joining the three way kerb into a corner.

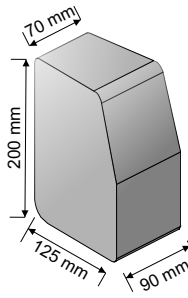
Internal & External Radial: For creating a curved or circular feature.

3 Way Kerb Finishes and colours: Tumbled or Smooth finish in 3 colour options.

Corner & Radial Finishes and colours: Smooth only finish in 3 colour options.



3 Way Internal Radial



3 Way External Radial



Damson Cobble



Damson Smooth



Maple Cobble



Maple Smooth



Chestnut Cobble



Chestnut Smooth

Product	Brick Size mm	Colours Available	No per Ln.m	No per pack	Ln. M per slice	Ln. M per Pack	Pack Weight Kgs	No Packs per Artic	Sq.m per Arctic Load
3 Way Linear	200x125x100	Damson, Maple, Chestnut	10	252	4.2	25.2	1320	20	504
Internal Corner External Corner	200x125x125 200x125x125	Damson, Maple, Chestnut	n/a	n/a	n/a	n/a	n/a	n/a	n/a
Internal Radial External Radial	200x125x90/70 200x125x90/70	Damson, Maple, Chestnut	n/a	n/a	n/a	n/a	n/a	n/a	n/a

Raw Materials:
Sand, Cement, Stone and Pigment

Manufacturing Process:
Hydraulically pressed

Manufacturing Standards:
Manufactured to BS EN 1338:2003

Installation:
Installed to BS 7533-3:2005

Performance Criteria:
Strength: > 3.6MPa or 250 N/mm

Application:
Please refer to Health & Safety Data Sheets.

Manufacturing Standards:
All Barleystone products are manufactured to meet and exceed BS and exceed BS and European Standards.

Quality Systems:
Barleystone paving blocks undergo testing to standard EN 1338:2003 and are covered by CE certification.