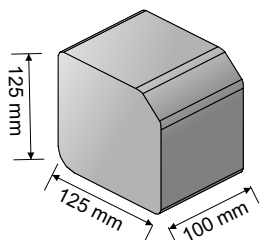
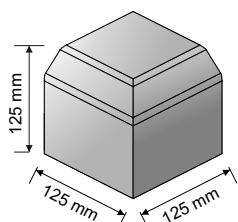


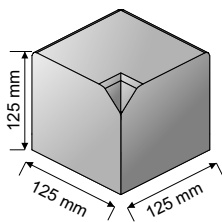
# Product Specification - 2 Way Kerb



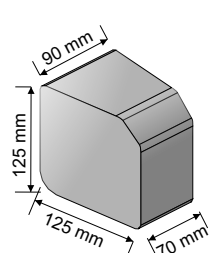
2 Way Linear Kerb



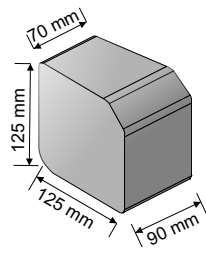
2 Way Internal Corner



2 Way External Corner



2 Way Internal Radial



2 Way External Radial

Small 2 Way Kerbs can be laid in two different ways making it extremely versatile. They can also be used in the construction of steps and other landscape features.



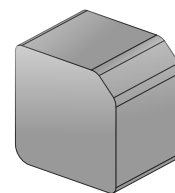
**2 Way Linear Kerb:** Can be laid in two directions - bullnose or splay.

**Internal & External Corner:** For joining the two way kerb into a corner.

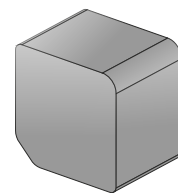
**Internal & External Radial:** For creating a curved or circular feature.

**2 Way Kerb Finishes and colours:** Tumbled or Smooth finish in 3 colour options.

**Corner & Radial Finishes and colours:** Smooth only finish in 3 colour options.



Splay Installation



Bullnose Installation



Damson Cobble



Damson Smooth



Maple Cobble



Maple Smooth



Chestnut Cobble



ChestnutSmooth

Product	Brick Size mm	Colours Available	No per Ln.m	No per pack	Ln. M per slice	Ln. M per Pack	Pack Weight Kgs	No Packs per Artic	Sq.m per Arctic Load
<b>2 Way Linear</b>	125x125x100	Damson, Maple, Chestnut	10	378	4.2	37.8	1200	23	869.4
<b>Internal Corner External Corner</b>	125x125x125 125x125x125	Damson, Maple, Chestnut	n/a	n/a	n/a	n/a	n/a	n/a	n/a
<b>Internal Radial External Radial</b>	125x125x90/70 125x125x90/70	Damson, Maple, Chestnut	n/a	n/a	n/a	n/a	n/a	n/a	n/a

**Raw Materials:**  
Sand, Cement, Stone and Pigment

**Manufacturing Process:**  
Hydraulically pressed

**Manufacturing Standards:**  
Manufactured to BS EN 1338:2003

**Installation:**  
Installed to BS 7533-3:2005

**Performance Criteria:**  
Strength: > 3.6MPa or 250 N/mm

**Application:**  
Please refer to Health & Safety Data Sheets.

**Manufacturing Standards:**  
All Barleystone products are manufactured to meet and exceed BS and exceed BS and European Standards.

**Quality Systems:**  
Barleystone paving blocks undergo testing to standard EN 1338:2003 and are covered by CE certification.